

rating

1



2



LONGITUDINAL CARBIDE DISTRIBUTION ANNEALED HIGH-SPEED STEEL

Etch: 4% Nital

1 Minute

100x

This chart presents the entire range of carbide distributions likely to be encountered in wrought high-speed steel bars.

This chart was developed and designed to provide a numerical classification of the different carbide structures found, independent of bar size or test location.

If this chart is to be used as an inspection standard, the maximum acceptable structure rating in each category must be defined as a function of bar size and test location. Note that under ratings 1 and 2 the carbides are so well broken up that they cannot be classified in categories as for ratings 3 to 6.



**LATROBE SPECIALTY
STEEL COMPANY**

Latrobe, Pennsylvania 15650-0031 U.S.A.
Phone: (724) 537-7711 Fax: (724) 532-6316
www.latrobebesteel.com © Copyright 2011 - LSS

HOOK

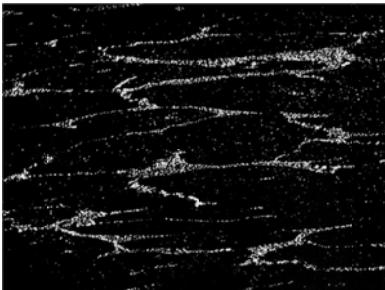
3



4



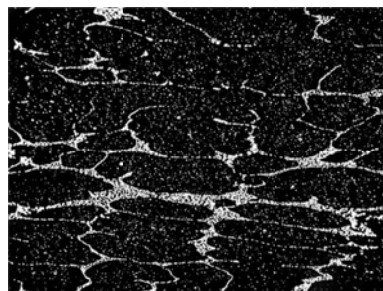
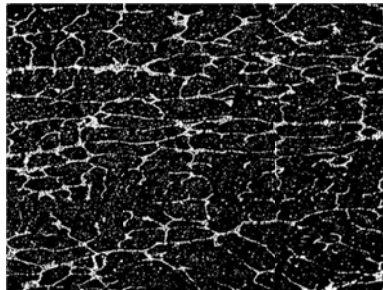
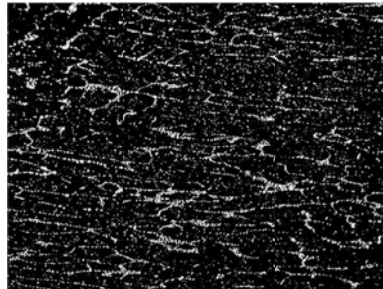
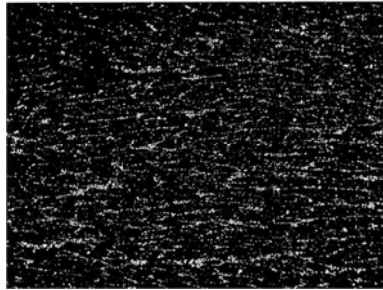
5



6



NETWORK



STREAK

